

# COMMUNITY WORKSHOP & OPEN HOUSE EXERCISES - SUMMARIZED INPUTS

NOVEMBER 14TH - 16TH, 2023

## LAND USE & ACTIVATION EXERCISE

At the Community Workshop / Charrette, and at the Community Open House, participants were asked to collaborate with other groups of attendees to express their map-based ideas within the Downtown Master Plan Study Area.

For this exercise, participants focused on the land uses and activation opportunities they would like to see in the future within the Downtown, and placed color-coded dots on areas to indicate those preferences. In addition, participants were encouraged to add notes to the map with markers and post-it notes to further elaborate on their specific preferences.

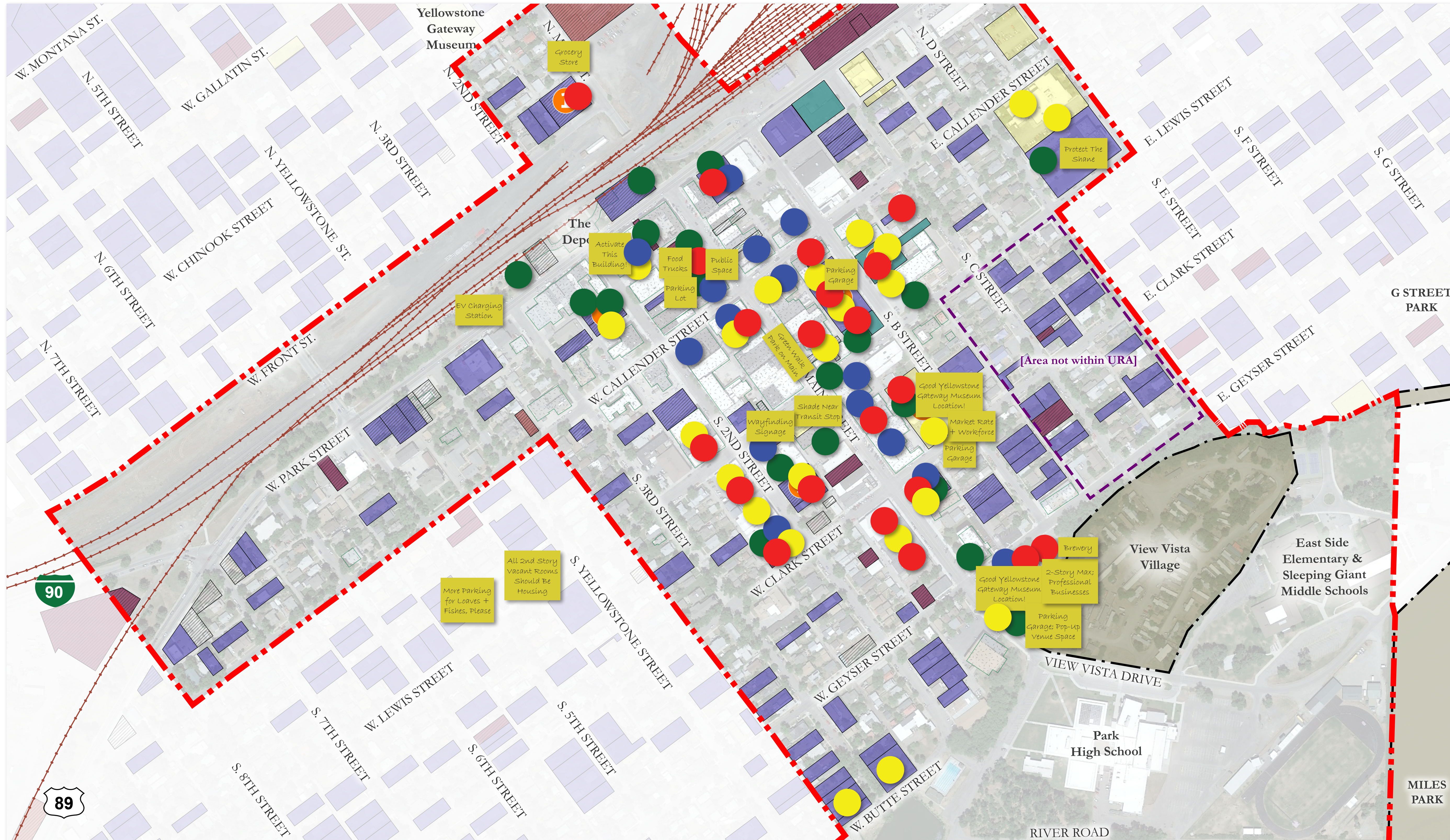
A consolidated set of the inputs received is shown on top of the map to the right. Consistent themes expressed across all of the participant groups included:

- **Pocket Park / Plaza interest to activate the parking lots along Main Street**
- **Expansion of some shops restaurants south toward the river**
- **Interest in Residential Infill**

### KEY TO SUMMARIZED RESULTS SHOWN ON MAP

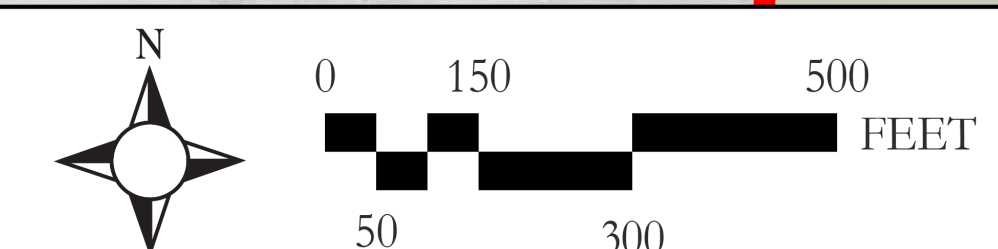
- Pocket Park / Plaza Space
- Residential
- Shops / Restaurants
- Hotel

\*\* Notes/additional markups added to map are shown as post-it notes \*\*



### Downtown Master Plan - Underutilized Parcels / Opportunity Sites Exercise

LEGEND	
	City of Livingston Boundary
	Plan Area Boundary (Also Urban Renewal Authority [URA] Boundary, except where noted)
	2+ Story Buildings
	City/School District Owned Parcels
	County Owned Parcels
	Vacant Parcels
	Low Floor Area Ratio Parcels (< 0.25)
	Parcels with Land Value 2Xs (or more) Building Value



# COMMUNITY WORKSHOP & OPEN HOUSE EXERCISES - SUMMARIZED INPUTS

NOVEMBER 14TH - 16TH, 2023

## CIRCULATION & MOBILITY EXERCISE

At the Community Workshop / Charrette, and at the Community Open House, participants were asked to collaborate with other groups of attendees to express their map-based ideas within the Downtown Master Plan Study Area.

For this exercise, participants focused on the circulation and mobility opportunities they would like to see in the future within the Downtown, and placed color-coded dots on areas to indicate those preferences. In addition, participants were encouraged to add notes to the map with markers and post-it notes to further elaborate on their specific preferences.

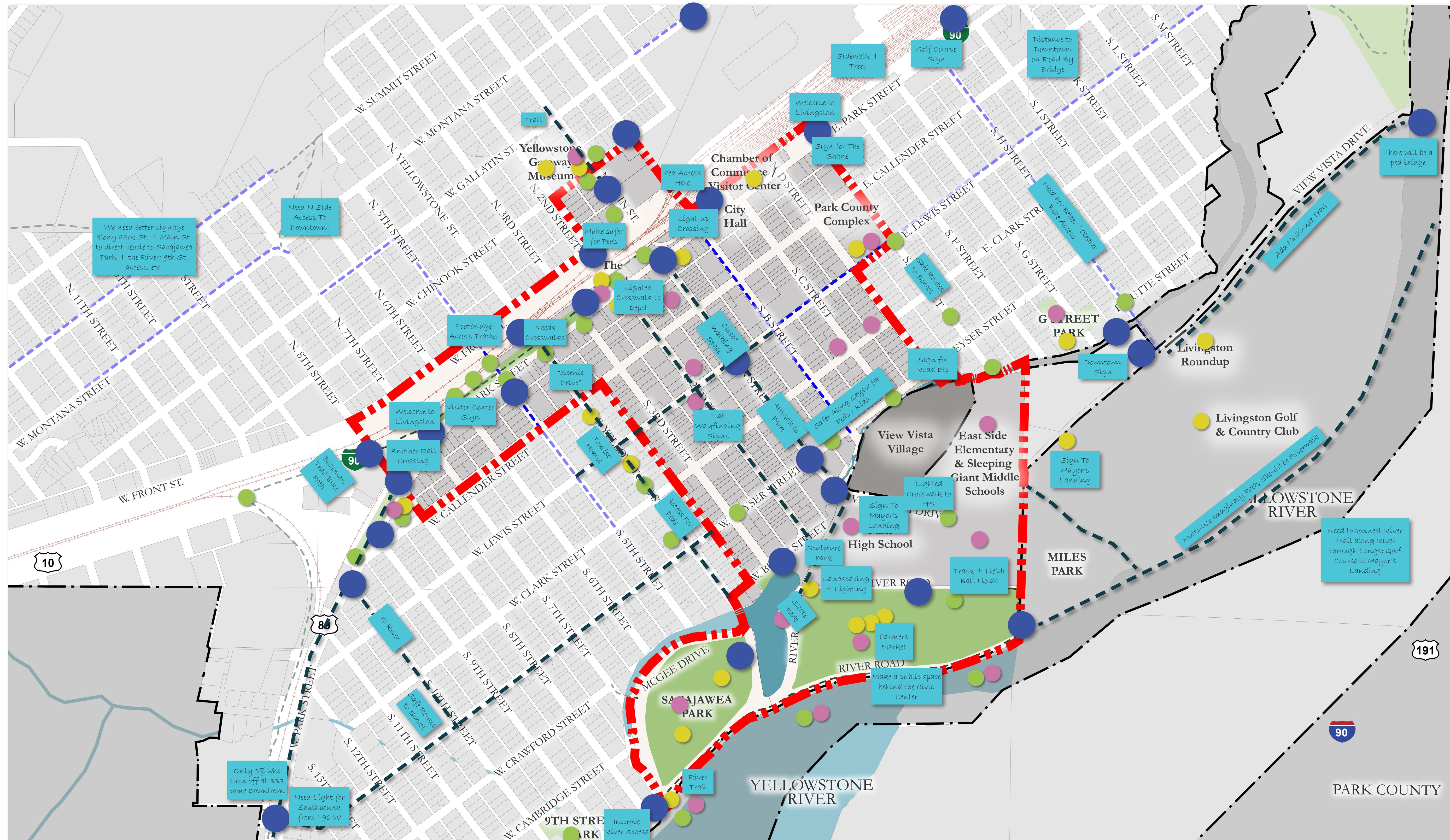
A consolidated set of the inputs received is shown on top of the map to the right. Consistent themes expressed across all of the participant groups included:

- Gateway desires along Park St., from I-90, at Geyser & Park St. and to/from Sacajawea Park
- Stronger Connections to Sacajawea Park
- Stronger Access to the North side of town

### KEY TO SUMMARIZED RESULTS SHOWN ON MAP

- Gateway Opportunity
- Local Destination
- Tourist Destination
- Need for better access
- Desire for better/safer connection

\*\* Notes/additional markups added to map are shown as post-it notes \*\*



**Downtown Master Plan - Circulation & Mobility Exercise**

Livingston DOWNTOWN MASTER PLAN

LEGEND

- City of Livingston Boundary
- Plan Area Boundary (Also Urban Renewal Authority [URA] Boundary, except where noted)
- Park
- Body of Water
- Rail Lines
- Previously Planned Bike Routes
- Multi-Use Trails

Scale: 0, 100, 300, 500, 1000 FEET

CRESCENDO PLANNING + DESIGN, EPS, RPA

# COMMUNITY WORKSHOP & OPEN HOUSE EXERCISES - SUMMARIZED INPUTS

NOVEMBER 14TH - 16TH, 2023

## PARKING MANAGEMENT EXERCISE

At the Community Workshop / Charrette, and at the Community Open House, participants were asked to collaborate with other groups of attendees to express their map-based ideas within the Downtown Master Plan Study Area.

For this exercise, participants focused on how they would like to see parking managed in the future within the Downtown, indicated places where they experience difficulty finding parking today. They placed color-coded dots on areas to indicate those preferences. In addition, participants were encouraged to add notes to the map with markers and post-it notes to further elaborate on their specific preferences.

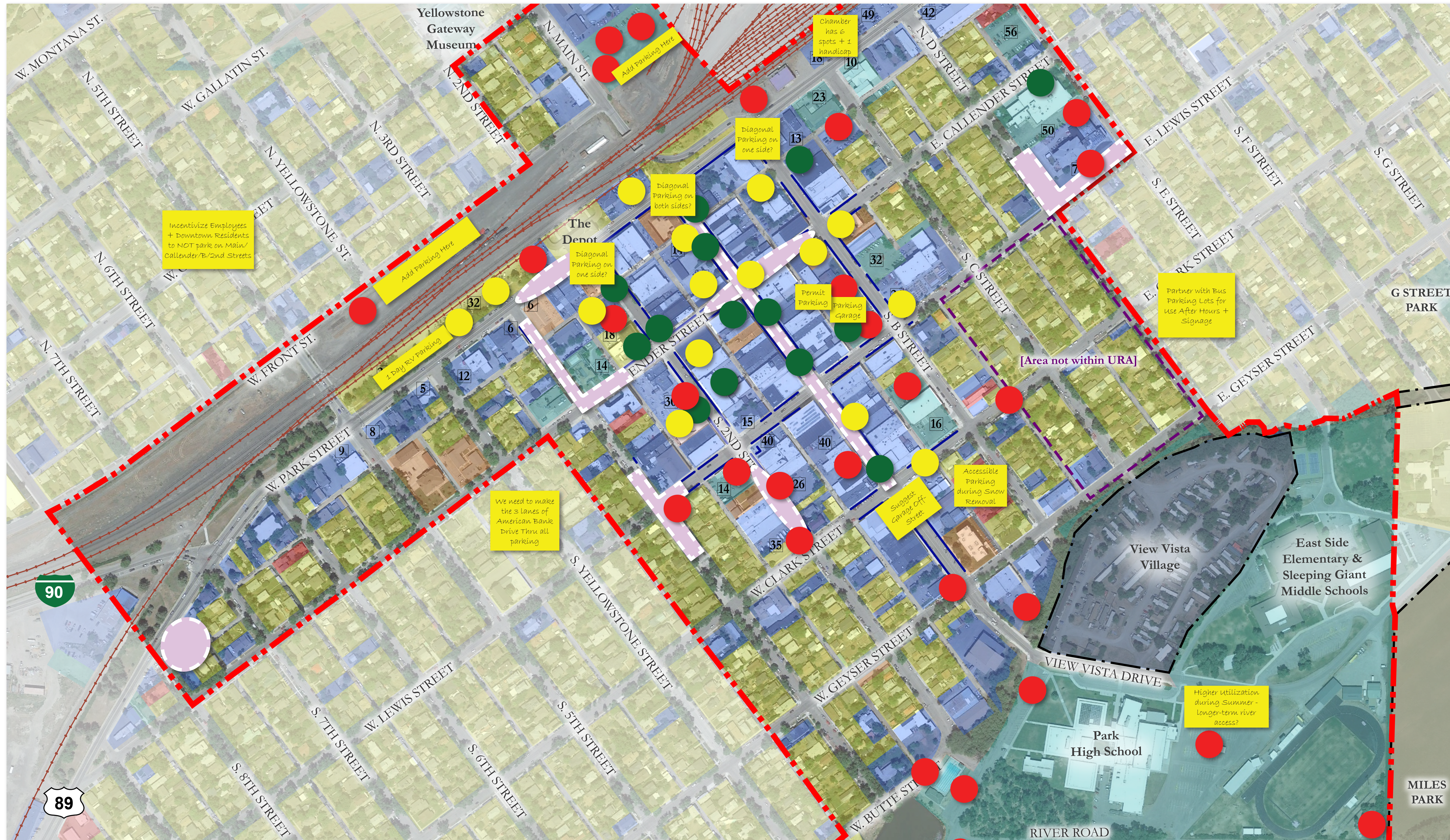
A consolidated set of the inputs received is shown on top of the map to the right. Consistent themes expressed across all of the participant groups included:

- Lack of available parking on Main St.; Desire for higher turnover spaces there
- Longer-term parking desire at The Depot & in Parking Lots

### KEY TO SUMMARIZED RESULTS SHOWN ON MAP

- Potential high-turnover area (~30 minutes)
- Potential long-stay area (3+ hours)
- Additional 2-hour limits needed
- Areas you have trouble finding parking regularly

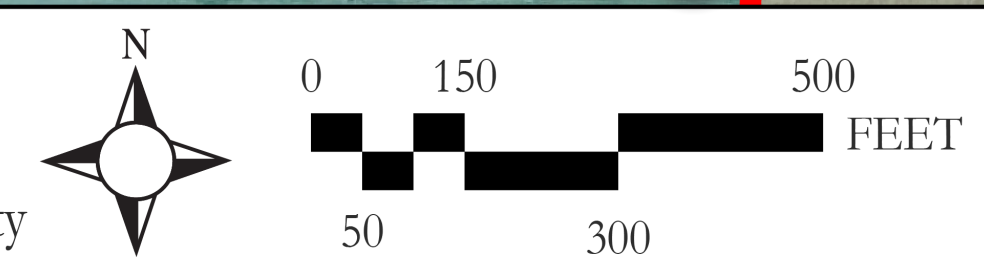
\*\* Notes/additional markups added to map are shown as post-it notes \*\*



### Downtown Master Plan - Parking Zones Exercise

- LEGEND
- City of Livingston Boundary
  - Plan Area Boundary (Also Urban Renewal Authority [URA] Boundary, except where noted)
  - # Parking Spots on Surface Lot
  - Existing 2-Hr Parking Zone

- Existing Land Uses
- Mixed-Use
  - Commercial
  - City/County
  - Medium Density Residential
  - Low Density Residential



# COMMUNITY WORKSHOP & OPEN HOUSE EXERCISES - SUMMARIZED INPUTS

NOVEMBER 14TH - 16TH, 2023

## ARTS/AMENITIES/ EVENTS EXERCISE

At the Community Workshop / Charrette, and at the Community Open House, participants were asked to collaborate with other groups of attendees to express their map-based ideas within the Downtown Master Plan Study Area.

For this exercise, participants focused on the arts, amenities and events opportunities they would like to see in the future within the Downtown, and placed color-coded dots on areas to indicate those preferences. In addition, participants were encouraged to add notes to the map with markers and post-it notes to further elaborate on their specific preferences.

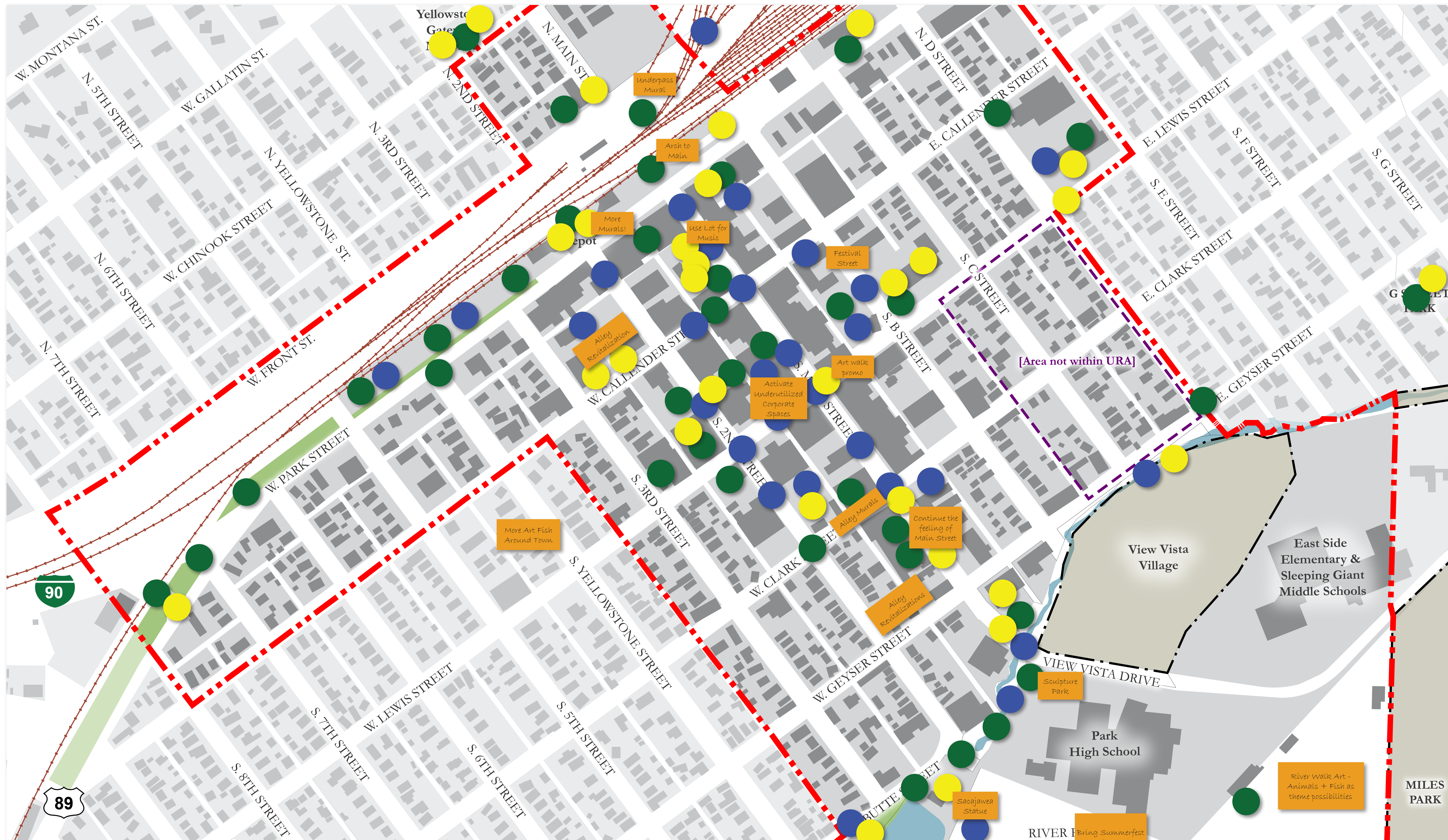
A consolidated set of the inputs received is shown on top of the map to the right. Consistent themes expressed across all of the participant groups included:

- Desire for Public Art as Gateway Opportunities along Park Street - 7th & Park; at Main & Park and Leading to the Yellowstone River
- Opportunities for temporary closures/events
- Promotion of The Depot & Gateway Museum

### KEY TO SUMMARIZED RESULTS SHOWN ON MAP

- Public Art Opportunity
- Opportunity for temporary closures / gatherings
- Asset / Amenity in need of promotion / enhancement

\*\* Notes/additional markups added to map are shown as post-it notes \*\*



### Downtown Master Plan - Arts/Amenities/Events Exercise

LEGEND

City of Livingston Boundary	Park	Building Footprints	Rail Lines
Plan Area Boundary (Also Urban Renewal Authority [URA] Boundary, except where noted)	Body of Water	Blocks	

