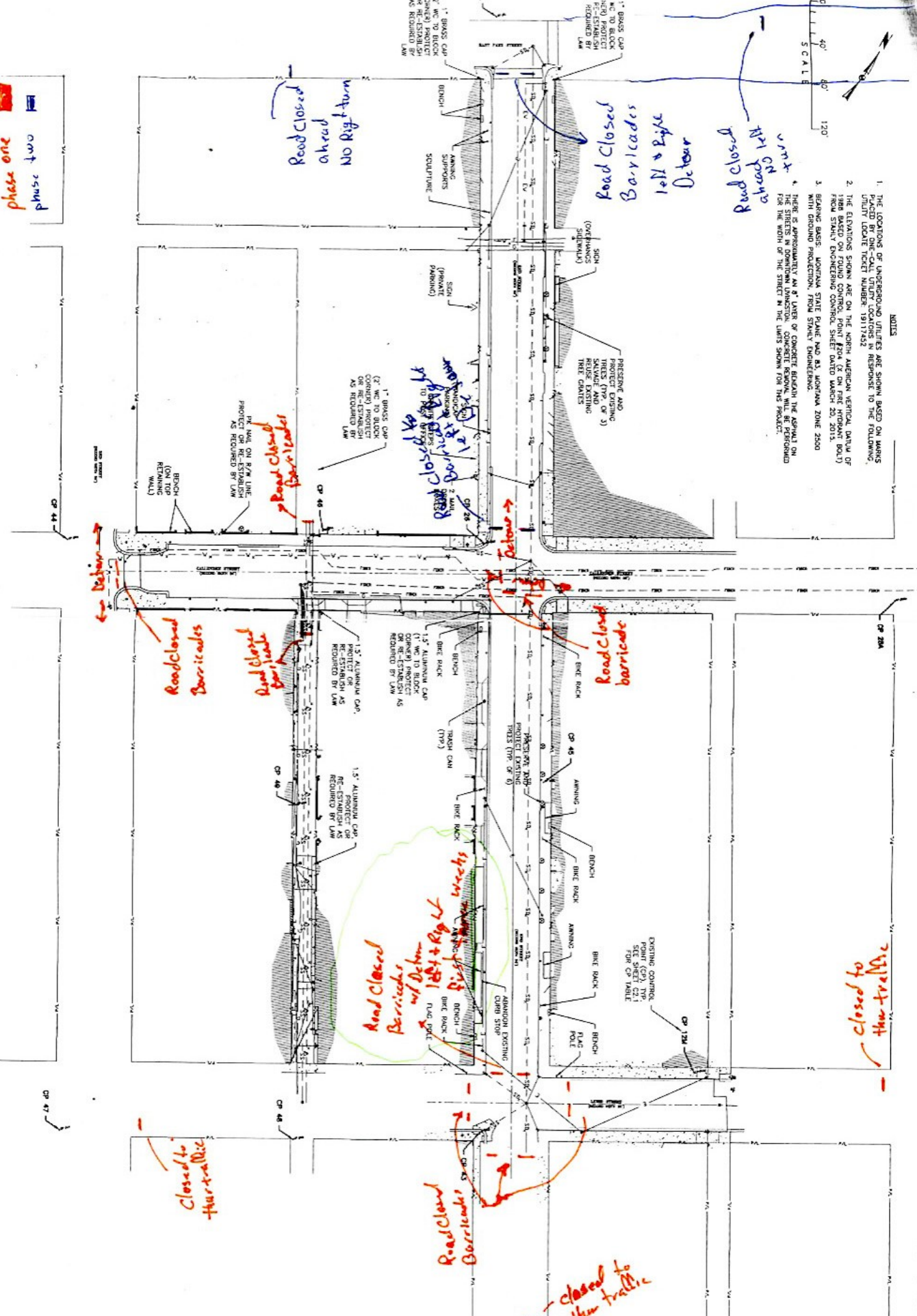


NOTES

1. THE LOCATIONS OF UNDERGROUND UTILITIES ARE SHOWN BASED ON MARKS PLACED BY ONE-CALL UTILITY LOCATORS IN RESPONSE TO THE FOLLOWING:
  - 1. THE LOCATION NUMBER: 19117522
  - 2. THE ELEVATIONS SHOWN ARE ON THE NORTH AMERICAN VERTICAL DATUM OF 1988 (NAD 83) UNLESS OTHERWISE NOTED.
  - 3. THE ELEVATIONS SHOWN ARE ON THE NORTH AMERICAN VERTICAL DATUM OF 1988 (NAD 83) UNLESS OTHERWISE NOTED.
2. THERE IS APPROXIMATELY AN 8" LAYER OF CONCRETE BEHIND THE ASPHALT ON THE SIDEWALKS AND DRIVEWAYS. THIS IS NOT SHOWN ON THIS PLAN.
3. THE ELEVATIONS SHOWN ARE ON THE NORTH AMERICAN VERTICAL DATUM OF 1988 (NAD 83) UNLESS OTHERWISE NOTED.



phase one  
phase two

